



CBR202302: Immunosuppressive Drugs



Webinar Resources



Webinar slides



Webinar recording and handout



Coding guidance document



Webinar Q&A will be posted at
[CBR.CBRPEPPER.org](https://cbr.cbrpepper.org)



CBR Help Desk:
<https://cbr.cbrpepper.org/Help-Contact-Us>

Webinar Objectives

- Understand the purpose and use of Comparative Billing Reports (CBRs)
- Comprehend the function of *CBR202302: Immunosuppressive Drugs*
- Gather resources for further questions and inquiries

Webinar Agenda

- What is a CBR?
- How to access your CBR
- Review a sample CBR
- *CBR202302*
- Helpful resources

The CMS Definition of a CBR

- CBRs are free, comparative data reports
- The Centers for Medicare & Medicaid Services (CMS) defines a CBR as an educational resource and a tool for possible improvement

History of the National CBR Program

The national CBR program is separate and not related to comparative billing reports that are produced by Medicare Administrative Contractors (MACs) in support of their individual provider education activities.

2010

- CMS implemented a national program to produce and disseminate CBRs to physicians, suppliers, pharmacies, and other health care providers

2018

- CMS combined the CBR and the Program for Evaluating Payment Pattern Electronic Reports (PEPPER) programs into one contract

2019

- RELI Group and its partners — TMF Health Quality Institute and CGS — began producing CBRs and PEPPERS

Why does CMS issue CBRs?

CBRs provide value to both CMS and providers

Value to CMS

- Supports the integrity of claims submission
- Summarizes claims data
- Provides an educational resource for possible improvement by providing coding guidelines information

Value to Providers

- Reflects providers' billing patterns as compared to their peers
- Provides information about vulnerabilities to the Medicare Trust Fund
- Informs providers whose billing patterns differ from those of their peers

Five Things a CBR Is Not

An indication of wrongdoing

An audit

A medical review CBR

A prompt to change your clinical care

A request for a response

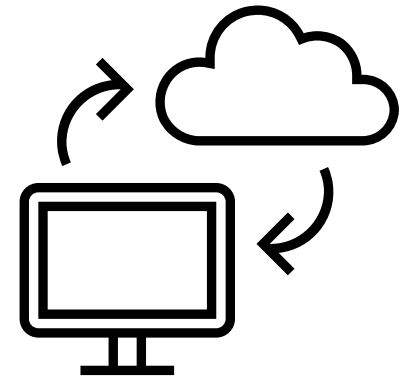
Why did I receive a CBR?

- A CBR was issued because your billing patterns differ from your peers' patterns, based on comparisons on a state, specialty, and/or nationwide level.
 - Receiving a CBR is not an indication of or precursor to an audit.



The Importance of Downloading Your CBR

- Download your CBR from the CBR Portal:
<https://cbrfile.cbrpepper.org>
- Guarantee the availability of the CBR to any department or employee tasked with reviewing it
- Provide easy access for compliance reviews





How to Access Your CBR

<https://cbrfile.cbrpepper.org>

CBR Portal

Our Team is committed to ensuring and maintaining the confidentiality of each provider's Comparative Billing Report (CBR). All CBR recipients are expected to maintain and safeguard the confidentiality of privileged data or information.

I certify that I am the ☐ CEO ☐ President ☐ Administrator ☐ Compliance Officer ☐ Owner/Healthcare Provider and that I have the actual authority to receive this CBR and all other confidential information concerning this health care provider. If a provider does not have a management position with any of these titles, the person who has the authority to make decisions on behalf of the provider should check the box for the title that best describes their position.

Your Information

First Name Last Name

Email

Confirm Email

Provider Information

Provider Name

Provider City Provider State / Territory

How did you learn about your CBR?

☐ Received an email notifying me that I had a CBR

☐ Received a fax notifying me that I had a CBR

☐ Received a letter via mail notifying me that I had a CBR

☐ Received a tweet from CMS that prompted me to check for a CBR

☐ From my national or state provider/professional association

☐ Received a notice from my Medicare Administrative Contractor (MAC)

☐ OTHER

CMS National Provider Identifier (NPI)

Optional: [Search for an NPI at the NPI Registry.](#)

Validation code

SUBMIT

The Purpose of *CBR202302*

- Protect the Medicare Trust Fund
- Increase providers' awareness about immunosuppressive drugs
- Support providers' internal compliance processes
- Provide coding guidelines and requirements

Vulnerability for Immunosuppressive Drugs

- According to the *2022 Medicare Fee-for-Service Supplemental Improper Payment Data* report:
 - There is a 23.7% improper payment rate for immunosuppressive drugs, which represents over \$63 million in improper payments
 - 50.6% of this improper payment rate is attributed to insufficient documentation
 - 12.9% of this improper payment rate is attributed to medical necessity errors

CBR202302 Outline

1. Introduction

- Explanation of CBR focus and billing area vulnerability
- Criteria for receipt of a CBR

2. Coverage and Documentation Overview

- Identification of Healthcare Common Procedure Coding System (HCPCS) codes
- Summary of provider's utilization

3. Metrics

- List of the metrics and outcomes analyzed with the CBR
- Definition of state and national peer groups

4. Methods and Results

- Overall analysis results
- Individualized results comparing CBR recipients to other providers

5. References and Resources

- Resources used for the CBR

CBR202302 Analysis and Results

- *CBR202302* summarizes statistics for services with dates of service from Oct. 1, 2021, through Sept. 30, 2022
- There were 21,427 rendering providers with combined allowed charges of over \$235 million for rendering providers on claims for immunosuppressive drugs

Provider Desired Behavior

- Help reduce the possibility of improper payments by taking the following actions:
 - Review HCPCS codes to ensure correct code assignment
 - Perform regular internal reviews of documentation and code selection to ensure accuracy and compliance

Metrics of *CBR202302*

This report is an analysis of the following metrics:

1. Percentage of immunosuppressive drug claims submitted, per code
2. Percentage of immunosuppressive drug claims submitted with modifier KX

The Criteria for Receiving *CBR202302*

- The criteria for receiving *CBR202302* are that a provider:
 1. Is significantly higher compared to either state or national average or percentages in either of the two metric calculations (i.e., greater than or equal to the 90th percentile), and
 2. Has at least three beneficiaries with claims submitted for immunosuppressive drugs, and
 3. Has at least \$3,000 in total allowed charges for immunosuppressive drugs.

Peer Comparison Outcomes

- **Significantly Higher** — Provider's value is greater than or equal to the 90th percentile from the state or national mean
- **Higher** — Provider's value is greater than the state or national mean
- **Does Not Exceed** — Provider's value is less than or equal to the state or national mean
- **Not Applicable (N/A)** — Provider does not have sufficient data for comparison

About the 90th Percentile

- Statistics are calculated for each provider in all metrics, as well as for all providers in the nation. Each provider's values were compared to the provider's peer state group's values, as well as the national values.
- Providers receiving a CBR have an outcome of "Significantly Higher" for either of the three metrics.
- These results look very different from the results of providers' peers on a state or national level.



Calculation of Metric 1

Percentage of Immunosuppressive Drug Claims Submitted, per Code

- Metric 1 is calculated as follows:
 - The total number of unique claim lines for each individual HCPCS code is divided by the total number of unique claims for immunosuppressive drugs

Calculation of Metric 2

Percentage of Immunosuppressive Drug Claims Submitted with Modifier KX

- Metric 2 is calculated as follows:
 - The total count of unique claims for all immunosuppressive drugs with the KX modifier is divided by the count of unique claims lines for all immunosuppressive drugs

CBR202302 Provider Trend Figure 1

- Figure 1: Total Number of Beneficiaries Who Had Claims Submitted for Immunosuppressive Drugs, Trend Over Time
- The years for the graph are defined as follows:
 - **Year 1:** October 1, 2019 – September 30, 2020
 - **Year 2:** October 1, 2020 – September 30, 2021
 - **Year 3:** October 1, 2021 – September 30, 2022

CBR202302 Provider Trend Figure 2

- Figure 2: Total Number of Paid Claims Submitted for Immunosuppressive Drugs, per Month, for Year 3

The Importance of the CBR Outcomes

- CBRs are educational and comparative tools for providers
- A CBR can help providers:
 - Ensure claims are correctly submitted to Medicare,
 - Complete self audits for compliance purposes, and
 - Review and confirm the importance of proper documentation and code assignment

CBR Help Desk

<https://cbr.cbrpepper.org/Help-Contact-Us>

CBR Help Desk

Welcome to our support page. View a list of [frequently asked questions](#) or click on the button below to submit your question.

Prior to submitting a request for assistance, to reduce the possibility that email replies from our help desk are blocked due to tightened email security (strong spam filters), please add our email Internet domain @tmf.org to your email Safe Senders List.



Submit a New Help Desk Request



Frequently Asked Questions

Frequently Asked Questions

<https://cbr.cbrpepper.org/FAQ>

Frequently Asked Questions

The following questions represent frequently asked questions (FAQs) from the provider community about Comparative Billing Reports (CBRs) and the CBR project in general. FAQs pertaining to a specific CBR release/topic are available with the resources specific to each CBR release/topic.

+	What is a CBR?
+	Why am I getting this report?
+	I have a question about the CBR I received. Who should I contact?
+	Can I get specific claim data related to this report?
+	I have a question about my claims. Who should I contact?
+	I did not receive a CBR. Can I request one?
+	How will I know if I have a CBR available?
+	Is there a sample CBR that I can view?

Helpful Resources

- *2022 HCPCS Level II Expert*. American Academy of Professional Coders.
- *2022 Medicare Fee-for-Service Supplemental Improper Payment Data*. U.S. Department of Health and Human Services (HHS). CMS.gov.
- *CMS and Its Claims Processing Contractors Issued Conflicting Guidance on the Proper Use of the KX Modifier for Part B Immunosuppressive Drug Claims*. Office of Inspector General. oig.hhs.gov.
- *Medicare Claims Processing Manual*, “Chapter 17, Section 80.3.” CMS. CMS.gov.

CBR Homepage

- Located at <https://cbr.cbrpepper.org/Home>
- Join the email list to receive information about future CBR releases
- Resources for the most recent CBR releases, along with links to previous CBR releases
- Each CBR topic and release provides resources:
 - Sample CBR
 - Peer group specialty/state and national data
 - Link to CBR Portal
 - Recorded webinar, transcript, and slides
 - Guidance and Considerations document
 - Q&A document
- Provide your feedback on CBRs
- CBR Success Stories

Questions?

