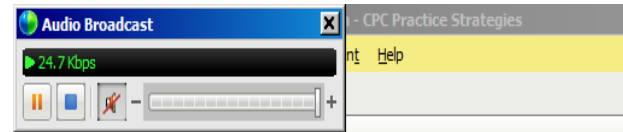


# Thank you for joining us!

- We will start at 3 p.m. ET.
  - You will hear silence until the session begins.
  - Handout: Available at [CBR.CBRPEPPER.org](http://CBR.CBRPEPPER.org).
  - A recording of today's session will be posted at the above location within two weeks.
- Please listen in by either:
    - Using your computer speakers (recommended): You automatically join the audio broadcast when entering the meeting (remember to increase your speaker volume; make sure you are not muted).





# ***CBR202001: Shoulder Arthroscopy***

February 4, 2020, 3 p.m. ET



# About Today's Presentation



Phone lines will be muted the entire duration of the training.



Submit questions pertinent to the webinar using the Q&A panel.



Questions will be answered verbally, as time allows, at the end of the session.

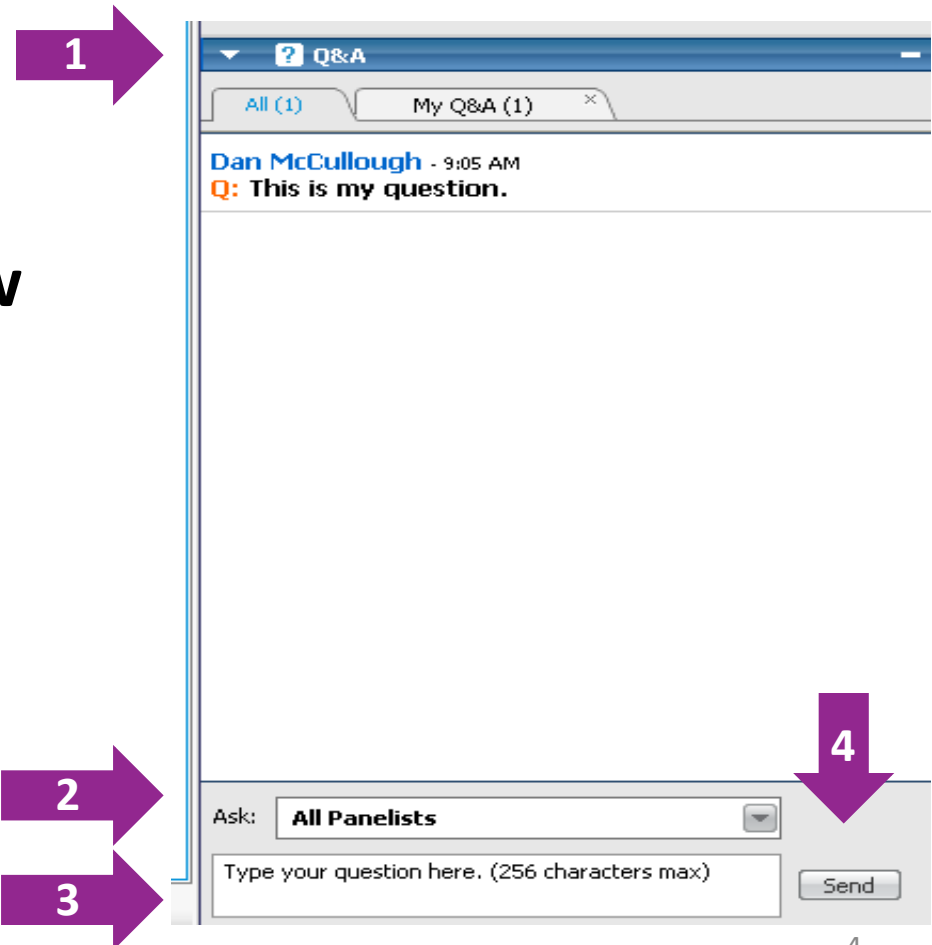


A “Q&A” document will be developed and posted at [CBR.CBRPEPPER.org](http://CBR.CBRPEPPER.org).

# To Ask a Question in Split Screen

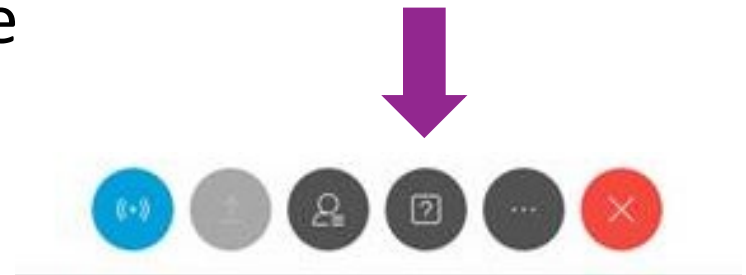
*Ask your question in Q&A as soon as you think of it.*

1. Go to the **“Q&A”** window located on the right side.
2. In the “Ask” box, select **“All Panelists.”**
3. Type in your question.
4. Click the **“Send”** button.



## To Ask a Question in Full Screen

1. Click on the “Q&A” button to bring up the Q&A window.
2. Type in your question (as in the previous slide).
3. Click the “**Send**” button.
4. Click “-” to close the window and to see the full screen again.



## Webinar Resources



Webinar Slides



Webinar Recording



Webinar Handout



Webinar Q&A will be posted at  
[CBR.CBRPEPPER.org](https://cbr.cbrpepper.org)



CBR Help Desk:  
<https://cbr.cbrpepper.org/Help-Contact-Us>

## Webinar Objective

- Understand the purpose and use of Comparative Billing Reports (CBRs).
- Comprehend the function of *CBR202001: Shoulder Arthroscopy*.
- Gather resources for further questions and inquiries.

# Webinar Agenda

- What is a CBR?
- How to access your CBR
- Review a sample CBR
- *CBR202001*
- Helpful resources
- Questions



## The CMS Definition of a CBR

- CBRs are free, comparative data reports.
- The Centers for Medicare & Medicaid Services (CMS) defines a CBR as an educational resource and a tool for possible improvement.

# History of the National CBR Program

The national CBR program is separate and not related to comparative billing reports that are produced by Medicare Administrative Contractors (MACs) in support of their individual provider education activities.

2010

- CMS implemented a national program to produce and disseminate CBRs to physicians, suppliers, pharmacies, and other health care providers.

2018

- CMS combined the CBR and the Program for Evaluating Payment Pattern Electronic Reports (PEPPER) programs into one contract.

2019

- RELI Group and its partners—TMF Health Quality Institute and CGS—began producing CBRs and PEPPERS.

# Why does CMS issue CBRs?

CBRs provide value to both CMS and providers.

## Value to CMS

- Supports the integrity of claims submission
- Summarizes claims data
- Provides an educational resource for possible improvement by providing coding guidelines information

## Value to Providers

- Reflects providers' billing patterns as compared to their peers
- Provides specific coding guidelines and billing information
- Informs providers whose billing patterns differ from those of their peers

# Why did I receive a CBR?

- A CBR was issued because your billing patterns differ from your peers' patterns, based on comparisons on a state, specialty, and/or nationwide level.
  - Receiving a CBR is not an indication of or precursor to an audit.





# How to Access Your CBR

<https://cbrfile.cbrpepper.org/>



## CBR Portal

Our Team is committed to ensuring and maintaining the confidentiality of each provider's Comparative Billing Report (CBR). All CBR recipients are expected to maintain and safeguard the confidentiality of privileged data or information.

I certify that I am the ☐ CEO ☐ President ☐ Administrator ☐ Compliance Officer ☐ Owner/Healthcare Provider

and that I have the actual authority to receive this CBR and all other confidential information concerning this health care provider. If a provider does not have a management position with any of these titles, the person who has the authority to make decisions on behalf of the provider should check the box for the title that best describes their position.

### Your Information

First Name	Last Name
<input type="text"/>	<input type="text"/>
Email	
<input type="text"/>	
Confirm Email	
<input type="text"/>	

### Provider Information

Provider Name	
<input type="text"/>	
Provider City	Provider State / Territory
<input type="text"/>	<input type="text"/>

How did you learn about your CBR?

- ☐ Received an email notifying me that I had a CBR
- ☐ Received a fax notifying me that I had a CBR
- ☐ Received a letter via mail notifying me that I had a CBR
- ☐ Received a tweet from CMS that prompted me to check for a CBR
- ☐ From my national or state provider/professional association
- ☐ Received a notice from my Medicare Administrative Contractor (MAC)
- ☐ OTHER

CMS National Provider Identifier (NPI)

Optional: [Search for an NPI at the NPI Registry](#)

Validation code

SUBMIT



# How to Access Your CBR

<https://cbrpepper.org/>



## Welcome to CBR PEPPER

Welcome to the new combined website for Comparative Billing Reports (CBRs) and the Program for Evaluating Payment Patterns Electronic Reports (PEPPERS). CBRs and PEPPERS are educational tools made available by the Centers for Medicare & Medicaid Services (CMS) for providers' use in support of their efforts to protect the Medicare Trust Fund.

### About CBR



Comparative Billing Reports (CBRs) are disseminated to the Medicare provider community to provide insight into Medicare policy and regional billing trends.

[Learn More About CBRs](#)

[Access Your CBR](#)



### About PEPPER



The Program for Evaluating Payment Patterns Electronic Reports (PEPPERS) summarizes provider-specific Medicare claims data statistics for Medicare Part A discharges and services that have been identified as vulnerable to improper Medicare payments.

[Learn More About PEPPERS](#)

[Access Your PEPPER](#)

## Need Assistance?

**CBRs:** Go to help desk or [1-800-771-4430](tel:1-800-771-4430)

**PEPPERS:** Go to help desk or phone [1-800-771-4430](tel:1-800-771-4430)

This website is developed and maintained by RELI Group, under contract with the Centers for Medicare & Medicaid Services.

For information about the availability of auxiliary aids and services, please visit: <http://www.medicare.gov/about-us/nondiscrimination/nondiscrimination-notice.html>.

# ***CBR202001* Formatting**

## **1. Introduction**

- Explanation of CBR focus and billing area vulnerability
- Criteria for receipt of a CBR

## **2. Coverage and Documentation Overview**

- Identification of Current Procedural Terminology® (CPT®) codes
- Summary of provider's utilization

## **3. Metrics**

- List of the metrics and outcomes analyzed with the CBR
- Definition of state and national peer groups

## **4. Methods and Results**

- Overall analysis results
- Individualized results comparing CBR recipients to other providers

## **5. References and Resources**

- Resources used for the CBR

# Shoulder Arthroscopy Vulnerability

- In the abstract for the study [Cost of Shoulder Surgery](#), an assessment of the costs of shoulder surgery is presented.
- The study evaluated four groups of 50 patients representing four arthroscopy treatment interventions and found the following:
  - Patients' lengths of stay spanned between zero days and five days.
  - The average cost of the treatment was between \$7,246 and \$16,323.



# Cost of Shoulder Arthroscopy

- In *The Costs Associated with the Evaluation of Rotator Cuff Tears Before Surgical Repair*, a study printed in the *Journal of Shoulder and Elbow Surgery*, the following data was compiled for a group of 92,688 patients:
  - “A total of \$161,993,100 was charged during the preoperative period, for an average of \$1,748 per patient.”

# Shoulder Arthroscopy Complications

- The abstract for the study [Complications Associated with Arthroscopic Shoulder Surgery](#) says the following:
  - “Shoulder arthroscopy presents increased risk of complications over knee arthroscopy in regard to vascular and neurologic injury, fluid extravasation, stiffness, iatrogenic tendon injury, and equipment failure.”

# ***CBR202001* CBR Provider and Beneficiary Focus**

- *CBR202001* analyzes the following:
  - Claims submitted by rendering providers for shoulder arthroscopy
  - Claims for beneficiaries treated for shoulder complaints who also underwent a shoulder arthroscopy procedure to determine whether conservative treatments of physical therapy and sub-acromial injections were performed first for diagnoses that reflected shoulder complaints

## ***CBR202001* Analysis and Results**

- *CBR202001* summarizes statistics for services with dates of service from Sept. 1, 2018, through Aug. 31, 2019.
- There were 17,154 rendering providers with combined allowed charges of over \$254.4 million for claims submitted for shoulder arthroscopy.

## Metrics of *CBR202001*

This report is an analysis of the following metrics:

- The percent of beneficiaries who had shoulder arthroscopy without conservative treatment within 12 weeks prior to shoulder arthroscopy
- The average allowed amount per beneficiary who had shoulder arthroscopy without conservative treatment within 12 weeks prior to shoulder arthroscopy
- The average number of physical rehabilitation claims per beneficiary by any physician within 12 weeks prior to shoulder arthroscopy

## Metric 1 of *CBR202001*

Metric 1 analyzes the following:

- The percent of beneficiaries who had shoulder arthroscopy without conservative treatment within 12 weeks prior to shoulder arthroscopy

## Metric 2 of *CBR202001*

Metric 2 analyzes the following:

- The average allowed amount per beneficiary who had shoulder arthroscopy without conservative treatment within 12 weeks prior to shoulder arthroscopy

## Metric 3 of *CBR202001*

Metric 3 analyzes the following:

- The average number of physical rehabilitation claims per beneficiary by any physician within 12 weeks prior to shoulder arthroscopy



# The Criteria for Receiving *CBR202001*

The criteria for receiving *CBR202001* is that the provider:

- Is significantly higher compared to either state or national percentages for Metric 1 (greater than or equal to the 90th percentile), or is significantly lower compared to either state or national percentages for Metric 3 (less than or equal to the 10th percentile), and
- Has at least five beneficiaries with CPT® codes 29806, 29807, 29819, 29820, 29821, 29822, 29823, 29824, 29825, 29826, 29827, or 29828, and
- Has at least \$600 or more in total allowed charges for claims with CPT® codes 29806, 29807, 29819, 29820, 29821, 29822, 29823, 29824, 29825, 29826, 29827, or 29828.

# Peer Comparison Outcomes

- There are four possible outcomes for the CBR comparisons:
  - 1. Significantly Higher or Lower — Provider’s value is greater than or equal to the 90th percentile from the state or national mean (“Significantly Higher” for Metric 1 only), or provider’s value is less than or equal to the 10th percentile from the state or national mean (“Significantly Lower” for Metric 3 only).
  - 2. Higher or Lower — Provider’s value is greater than the state or national mean (“Higher” for Metric 1 only), or provider’s value is less than the state or national mean (“Lower” for Metric 3 only).
  - 3. Does Not Exceed or Is Not Below — Provider’s value is less than or equal to the state or national mean (“Does Not Exceed” for Metric 1 only), or provider’s value is greater than or equal to the state or national mean (“Is Not Below” for Metric 3 only).
  - 4. Not Applicable (N/A) — Provider does not have sufficient data for comparison.

# About the 90<sup>th</sup>/10<sup>th</sup> Percentile

- Statistics were calculated for each provider in three metrics, as well as for all providers in the nation. Each provider's values were compared to his/her peer state group's values, as well as the national values.
- Providers receiving a CBR have an outcome of "Significantly Higher" for Metric 1, and/or an outcome of "Significantly Lower" for Metric 3.
- These results look very different from the results of providers' peers on a state or national level.



# Calculation of Metric 1

## **Metric 1: Percent Of Beneficiaries Who Had Shoulder Arthroscopy Without Conservative Treatment Within 12 Weeks Prior to Shoulder Arthroscopy**

- The count of beneficiaries treated for shoulder complaints who had shoulder arthroscopy without a conservative treatment within 12 weeks prior to the shoulder arthroscopy procedure is divided by the count of beneficiaries treated for shoulder complaints who had shoulder arthroscopy. The result is multiplied by 100.

$$\left( \frac{\text{Beneficiaries with shoulder arthroscopy without conservative treatment}}{\text{Beneficiaries with shoulder arthroscopy}} \right) \times 100$$

## Calculation of Metric 2

### **Metric 2: Average Allowed Amount per Beneficiary Who Had Shoulder Arthroscopy Without Conservative Treatment Within 12 Weeks Prior to Shoulder Arthroscopy**

- The sum of allowed amounts for beneficiaries treated for shoulder complaints who had a shoulder arthroscopy procedure without conservative treatment within 12 weeks prior to the procedure is divided by the count of beneficiaries treated for shoulder complaints who also had shoulder arthroscopy without conservative treatment within 12 weeks prior to the procedure.

$$\frac{\text{Sum of allowed amount for beneficiaries w/ shoulder arthroscopy w/o conservative treatment}}{\text{Count of beneficiaries with shoulder arthroscopy without conservative treatment}}$$

## Calculation of Metric 3

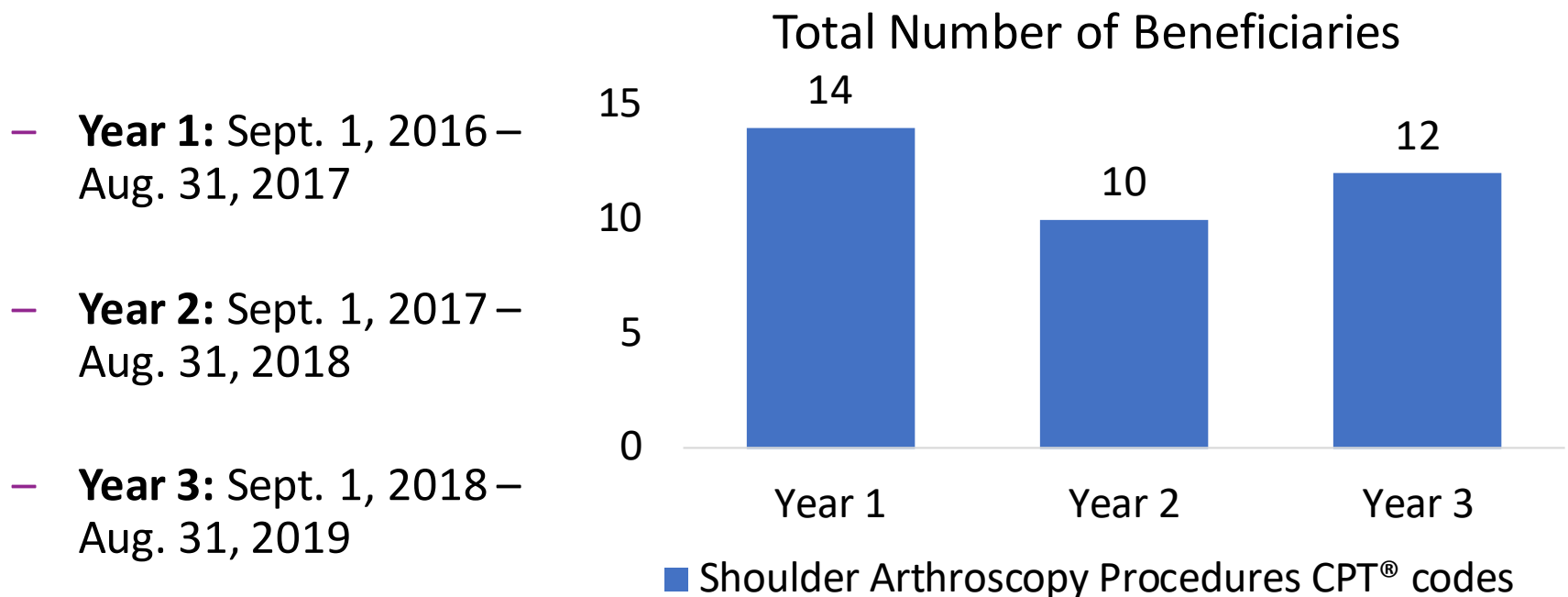
### **Metric 3: Average Number of Physical Rehabilitation Claims per Beneficiary by Any Physician Within 12 Weeks Prior to Shoulder Arthroscopy**

- The sum of physical rehabilitation claims per beneficiary within 12 weeks prior to shoulder arthroscopy is divided by the number of beneficiaries who had shoulder arthroscopy.

$$\frac{\text{Rehabilitation claims prior to shoulder arthroscopy}}{\text{Beneficiaries with shoulder arthroscopy}}$$

# Provider Trends

**Figure 1: Analysis of Trends Over Time for Total Number of Beneficiaries with Submitted Claims for Shoulder Arthroscopy Procedures**



# CBR Help Desk

<https://cbr.cbrpepper.org/Help-Contact-Us>

## CBR Help Desk

Welcome to our support page. View a list of [frequently asked questions](#) or click on the button below to submit your question.

Prior to submitting a request for assistance, to reduce the possibility that email replies from our help desk are blocked due to tightened email security (strong spam filters), please add our email Internet domain @tmf.org to your email Safe Senders List.



**Submit a New Help Desk Request**



**Frequently Asked Questions**



# Frequently Asked Questions

<https://cbr.cbrpepper.org/FAQ>

## Frequently Asked Questions

The following questions represent frequently asked questions (FAQs) from the provider community about Comparative Billing Reports (CBRs) and the CBR project in general. FAQs pertaining to a specific CBR release/topic are available with the resources specific to each CBR release/topic.

+	What is a CBR?
+	Why am I getting this report?
+	I have a question about the CBR I received. Who should I contact?
+	Can I get specific claim data related to this report?
+	I have a question about my claims. Who should I contact?
+	I did not receive a CBR. Can I request one?
+	How will I know if I have a CBR available?
+	Is there a sample CBR that I can view?

# Helpful Resources

- *CPT® Professional Edition*, American Medical Association.
- *International Classification of Diseases, 10th Revision, Clinical Modification (ICD-10-CM) Expert, 2020*, American Academy of Professional Coders.
- [\*Complications Associated with Arthroscopic Shoulder Surgery\*](#). National Center for Biotechnology Information.
- [\*The Costs Associated with the Evaluation of Rotator Cuff Tears Before Surgical Repair\*](#). Yeraniosian, Michael, et al. *Journal of Shoulder and Elbow Surgery*, December 2013, Volume 22, Issue12, Pages 1662–1666. Academia.edu.
- [\*Costs of Shoulder Surgery\*](#). National Center for Biotechnology Information.



### Welcome to CBR Resources

This is the official site for information, training and support related to Comparative Billing Reports (CBRs).

CBRs are disseminated to the Medicare provider community to provide insight into Medicare policy and regional billing trends. The CBRs that are distributed to the provider community contain an analysis of billing practices across geographic and service areas. Medicare Administrative Contractors (MACs) have been producing and disseminating comparative billing reports to providers in their jurisdiction as part of their provider education efforts for many years. The Centers for Medicare & Medicaid Services (CMS) has formalized and expanded the program to the national level.

A CBR will present the results of statistical analyses that compare an individual provider's billing practices for a specific billing code or policy group with the billing practices of that provider's peer groups and national averages. Each CBR is unique to a single provider and is only available to that individual provider. CBRs are not publicly available.

Success stories: How your peers have used CBRs.

[Go to Success Stories](#)

#### Upcoming Event: CBR201913 Mohs Microsurgery

**When:** Tuesday, January 7, 2020

3:00 - 4:00 p.m. EDT

**Topic:** This session will review the Comparative Billing Report (CBR) 201913 on Mohs Microsurgery, released December 20, 2019

[REGISTER](#)[Handouts](#)

#### CBR 201913:

##### Mohs Microsurgery

- Sample CBR: Mock Provider Data (PDF)
- Training: Register
- **When:** Tuesday, January 7, 2020
- Handouts
- National/State Data (XLSX)
- Access Your CBR

#### CBR 201912:

##### Drug Units in Excess of MUE

- Sample CBR: Mock Provider Data (PDF)
- Training: Recording and Handouts
- National/State Data (XLSX)
- Access Your CBR

#### CBR 201911:

##### Atherectomy Only as Initial Intervention

- Sample CBR: Mock Provider Data (PDF)
- Training: Recording and Handouts
- National/State Data (XLSX)
- Access Your CBR

#### CBR 201910:

##### Upper and Lower Endoscopy on Different Dates of Service

- Sample CBR: Mock Provider Data (PDF)
- Training: Recording and Handouts
- National/State Data (XLSX)
- Access Your CBR

#### CBR 201909:

##### Venipuncture

- Sample CBR (Mock Provider Data) (updated 10/31/19) (PDF)
- Training: Recording and Handouts (updated 10/31/19)
- National/State Data (XLSX)
- Access Your CBR

#### CBR 201908:

##### Breast Re-Excision

- Sample CBR: Mock Provider Data (PDF)
- Training: Recording and Handouts
- National/Specialty Data (XLSX)
- Access Your CBR

#### CBR 201907:

##### Modifier 25: Dermatology

- Sample CBR: Mock Provider Data (PDF)
- Training: Recording and Handouts
- National/State Data (XLSX)
- Access Your CBR

#### CBR 201906:

##### Emergency Department Services

- Sample CBR: Mock Provider Data (PDF)
- Training: Recording and Handouts
- National/State Data (XLSX)
- Access Your CBR

#### CBR 201905:

##### Air Ambulance Transports

- Sample CBR: Mock Provider Data (PDF)
- Training: Recording and Handouts
- National/Regional Data (XLSX)
- Access Your CBR

# Questions?

