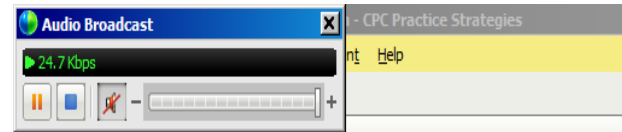


Thank you for joining us!

- We will start at 3 p.m. ET.
 - You will hear silence until the session begins.
 - Handout: Available at CBR.CBRPEPPER.org.
 - A recording of today's session will be posted at the above location within two weeks.
- Please listen in by either:
 - Using your computer speakers (recommended): You automatically join the audio broadcast when entering the meeting (remember to increase your speaker volume; make sure you are not muted).



- Dialing 1-415-655-0001 (passcode 737 308 269) (limited to 500 callers).



CBR201906 Emergency Department Services

June 11, 2019, 3 p.m. ET



About Today's Presentation



Phone lines will be muted the entire duration of the training.



Submit questions pertinent to the webinar using the Q&A panel.



Questions will be answered verbally, as time allows, at the end of the session.

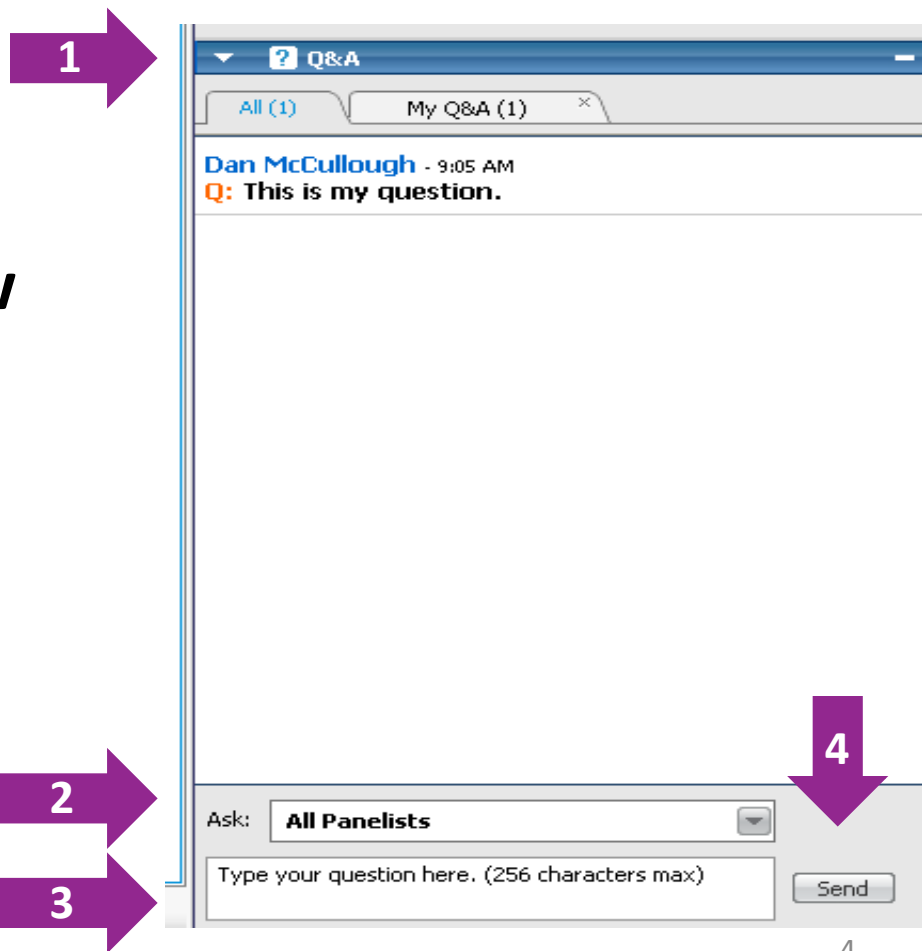


A “Q&A” document will be developed and posted at CBR.CBRPEPPER.org.

To Ask a Question in Split Screen

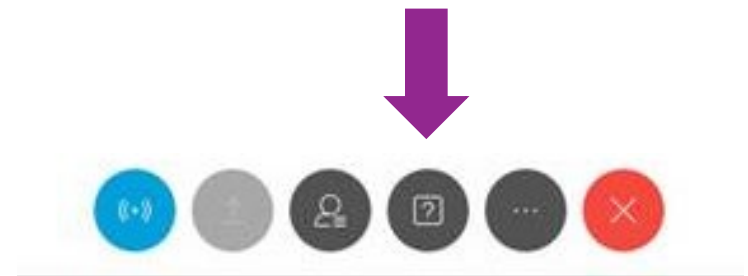
Ask your question in Q&A as soon as you think of it.

1. Go to the **“Q&A”** window located on the right side.
2. In the **“Ask”** box, select **“All Panelists.”**
3. Type in your question.
4. Click the **“Send”** button.



To Ask a Question in Full Screen

1. Click on the “Q&A” button to bring up the Q&A window.
2. Type in your question (as in the previous slide).
3. Click the “**Send**” button.
4. Click “-” to close window to see full screen again.



Webinar Resources



Webinar Slides



Webinar Recording



Webinar Handout



Webinar Q&A will be posted at
[CBR.CBRPEPPER.org](https://cbr.cbrpepper.org)



CBR Help Desk:
<https://cbr.cbrpepper.org/Help-Contact-Us>

Webinar Objective

- Understand the purpose and use of Comparative Billing Reports (CBR).
- Comprehend the function of CBR201906: Emergency Department Services.
- Gather resources for further questions and inquiries.

Webinar Agenda

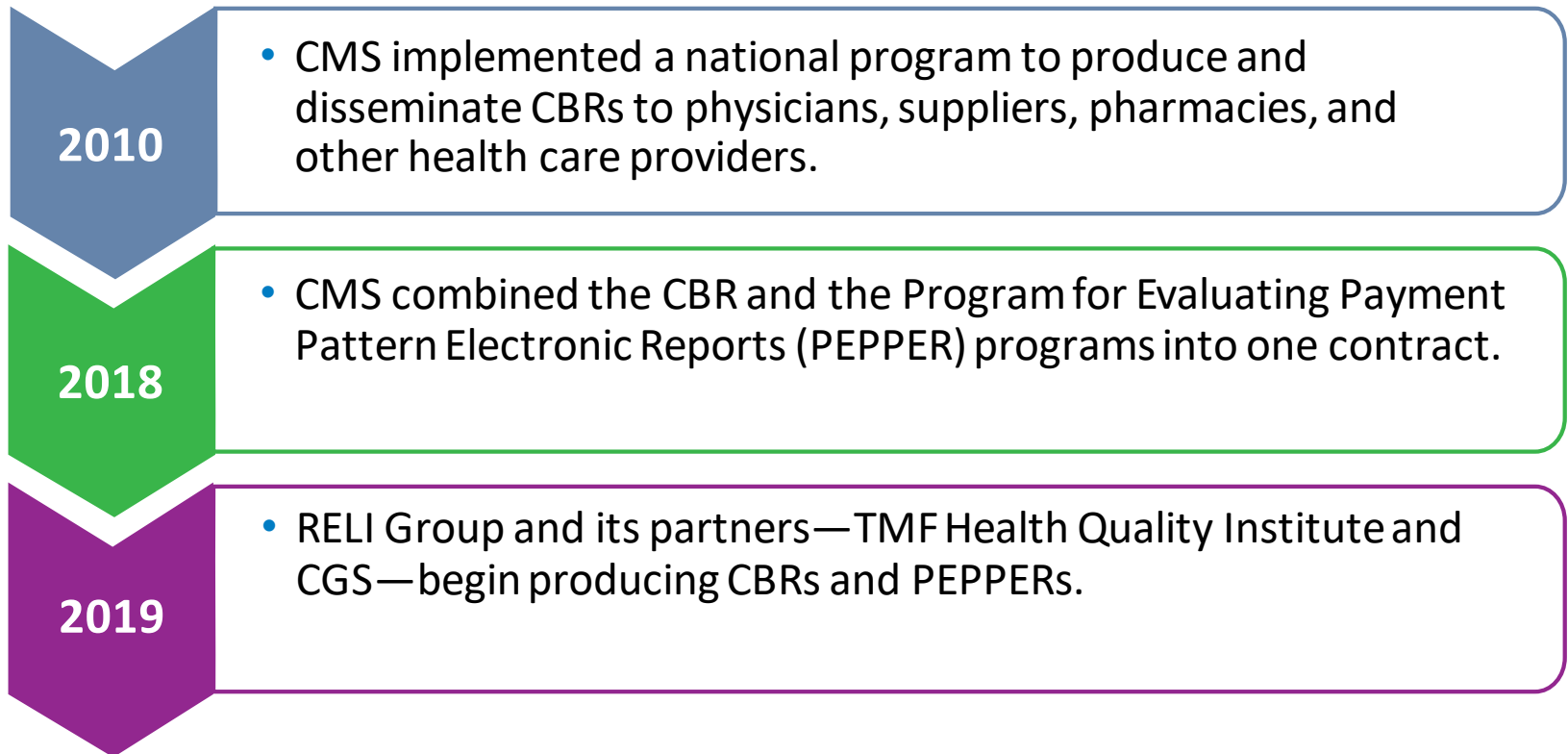
- What is a CBR?
- How to access your CBR
- Review a sample CBR
- CBR201906
- Helpful resources
- Questions

The CMS Definition of a CBR

- CBRs are free, comparative data reports.
- CMS defines a CBR as an educational resource and a tool for possible improvement.

History of the National CBR Program

The national CBR program is separate and not related to comparative billing reports that are produced by Medicare Administrative Contractors (MACs) in support of their individual provider education activities.



Why Does CMS Issue CBRs?

CBRs provide value to both CMS and Providers

Value to CMS

- Supports the integrity of claims submission
- Summarizes claims data
- Provides an educational resource for possible improvement by providing coding guidelines information

Value to Providers

- Reflects providers' billing patterns as compared to their peers
- Provides specific coding guidelines and billing information
- Informs providers whose billing patterns differ from those of their peers

Why did I receive a CBR?

- A CBR is presented because your billing patterns differ from your peers' patterns, based on comparisons on a specialty or nationwide level.
 - Receiving a CBR is not an indication of or precursor to an audit.



How to Access Your CBR

<https://cbrfile.cbrpepper.org/>



CBR Portal

Our Team is committed to ensuring and maintaining the confidentiality of each provider's Comparative Billing Report (CBR). All CBR recipients are expected to maintain and safeguard the confidentiality of privileged data or information.

I certify that I am the CEO President Administrator Compliance Officer Owner/Healthcare Provider and that I have the actual authority to receive this CBR and all other confidential information concerning this health care provider. If a provider does not have a management position with any of these titles, the person who has the authority to make decisions on behalf of the provider should check the box for the title that best describes their position.

Your Information

First Name Last Name

Email

Confirm Email

Provider Information

Provider Name

Provider City Provider State / Territory

How did you learn about your CBR?

- Received an email notifying me that I had a CBR
- Received a fax notifying me that I had a CBR
- Received a tweet from CMS that prompted me to check for a CBR
- From my national or state provider/professional association
- Received a notice from my Medicare Administrative Contractor (MAC)
- Heard an announcement on a recent CMS Open Door Forum
- OTHER
- None of the above

CMS National Provider Identifier (NPI)

Optional: [Search for an NPI at the NPI Registry](#)

Validation code

SUBMIT



How to Access Your CBR

<https://cbrpepper.org/>



Welcome to CBR PEPPER

Welcome to the new combined website for Comparative Billing Reports (CBRs) and the Program for Evaluating Payment Patterns Electronic Reports (PEPPERS). CBRs and PEPPERS are educational tools made available by the Centers for Medicare & Medicaid Services (CMS) for providers' use in support of their efforts to protect the Medicare Trust Fund.

About CBR

CBR Comparative Billing Reports (CBRs) are disseminated to the Medicare provider community to provide insight into Medicare policy and regional billing trends.

[Learn More About CBRs](#)

[Access Your CBR](#)



About PEPPER

PEPPER The Program for Evaluating Payment Patterns Electronic Reports (PEPPERS) summarizes provider-specific Medicare claims data statistics for Medicare Part A discharges and services that have been identified as vulnerable to improper Medicare payments.

[Learn More About PEPPERS](#)

[Access Your PEPPER](#)

Need Assistance?

CBRs: Go to help desk or [1-800-771-4430](tel:1-800-771-4430)

PEPPERS: Go to help desk or phone [1-800-771-4430](tel:1-800-771-4430)

This website is developed and maintained by RELI Group, under contract with the Centers for Medicare & Medicaid Services.

For information about the availability of auxiliary aids and services, please visit: <http://www.medicare.gov/about-us/nondiscrimination/nondiscrimination-notice.html>

CBR 201906 Formatting

1. Introduction

- Explanation of billing area and description of findings of the CBR

2. Coverage and Documentation Overview

- Identification of claims data and CPT® code information

3. Basic Coding Guidelines

- Itemization of CPT® codes and details of billing processes

4. Metrics

- Explanation of the data and analysis used for the CBR
- Detailed list of CPT® codes and the effect that the billing guidelines have on the CBR results

5. Methods and Results

- Overall analysis results and individualized results comparing CBR recipients to other providers

6. References and Resources

- Resources used for the CBR

CBR201906 Analysis and Focus

- CBR201906 summarizes statistics for services with dates of service from Dec. 1, 2017, through Nov. 30, 2018.
- 138,687 rendering providers billed allowed charges for Emergency Department Services codes.
- Analysis of rendering providers who billed CPT® codes 99281–99285 on Medicare Part B claims was extracted from the Integrated Data Repository, based on the latest version of claims as of Apr. 28, 2019.

Emergency Department Services Vulnerability

2018 Medicare Fee-for-Service Supplemental Improper Payment Data Report



Improper payment rate of 11.3 percent



Over \$238 million in projected improper
Medicare payments

CBR201906 CBR Code Focus

- CBR201906 focuses on rendering providers who submitted claims to Medicare Part B for Emergency Department Services.



Emergency Department Service Codes

- CPT® codes 99281, 99282, 99283, 99284, and 99285
- Submitted for Emergency Department Services according to:
 - History
 - Exam
 - Medical decision-making
- A visit is defined as a single date of service for a beneficiary.

Use of Modifier 25

- The *CPT® 2019 Professional Edition* defines Modifier 25 as a “significant, separately identifiable evaluation and management (E/M) service by the same physician or other qualified health care professional on the same day of the procedure or other service.”
- It should be used when the E/M service is above and beyond the usual pre- and post-operative work of a procedure.

Source: *CPT® 2019 Professional Edition*, American Medical Association

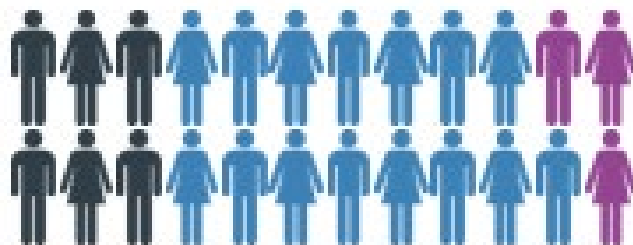
Metrics of Sample CBR

This report is an analysis of the following metrics:

- Percentage of Services Billed with CPT® Code 99285
- Percentage of Services Appended with Modifier 25
- Average Allowed Charges for all Medicare Part B Services, per Visit

Peer Comparison Outcomes

- There are four possible outcomes for the comparisons between the provider and his/her peer groups:
 - **Significantly Higher** — A provider’s value is above the 90th percentile from the peer specialty or national mean.
 - **Higher** — A provider’s value is greater than the peer specialty or national mean.
 - **Does Not Exceed** — A provider’s value is not higher than the peer specialty or national mean.
 - **N/A** — A provider does not have sufficient data for comparison.



About the 90th Percentile

- Statistics were calculated for each provider, in three metrics, and all providers in the nation. Each provider's values are compared to his/her peer specialty group's values, as well as the national values.
- Providers receiving a CBR have an outcome of "Significantly Higher" in any of the metrics.
- "Significantly Higher" means that a provider's value is above the 90th percentile from the peer specialty or national mean.
- These results look very different from the results of peers on a specialty or national level.



The Criteria for Receiving a CBR201906

Significantly higher compared to either state or national percentages in any of the three metrics (greater than the 90th percentile)

At least 11 beneficiaries with claims submitted for 99281, 99282, 99283, 99284, or 99285

At least \$2,000 or more in total allowed charges submitted for any of these codes: 99281, 99282, 99283, 99284, and 99285

Calculation of Metric 1

- The percentage of services billed with CPT[®] code 99285 is calculated by dividing the number of services with CPT[®] code 99285 by the total number of services with CPT[®] codes 99281–99285:

$$\left(\frac{\text{Number of Services with CPT}^{\text{®}} \text{ code 99285}}{\text{Total Number of Emergency Department Services}} \right) \times 100$$

Calculation of Metric 2

- The percentage of services appended with Modifier 25 is calculated by dividing the number of services with Modifier 25 by total number of services:

$$\left(\frac{\text{Number of Services with Modifier 25}}{\text{Total Number of Emergency Department Services}} \right) \times 100$$

Calculation of Metric 3

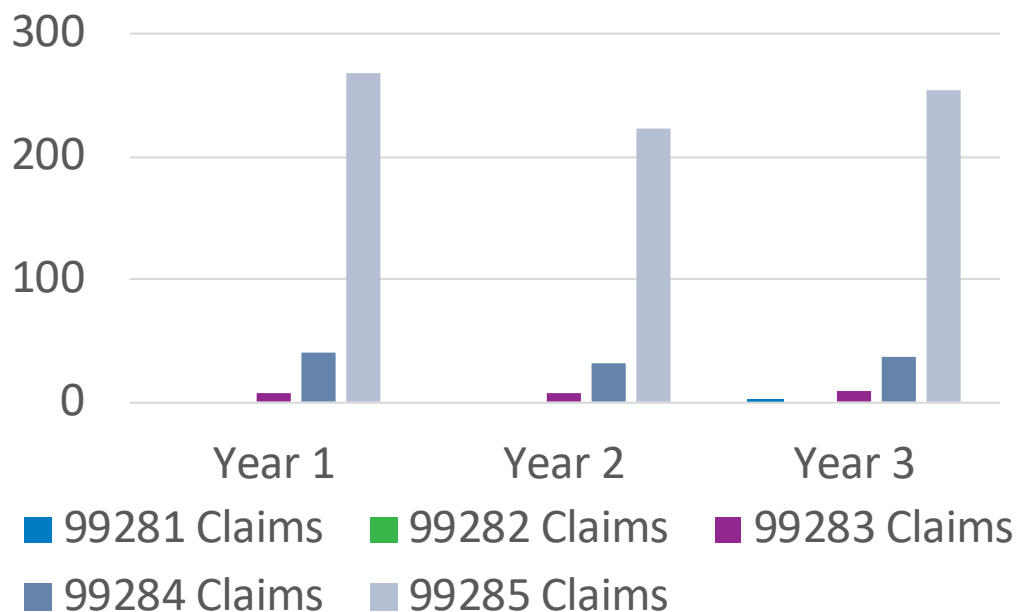
- The average allowed charges for all Medicare Part B services, per visit, is calculated by dividing the total number of allowed charges of all Medicare Part B emergency department visits by the total number of visits:

$$\frac{\text{(Total Allowed Charges of all Medicare Part B at ED)}}{\text{Total Number of Emergency Department Visits}}$$

Provider Trends

- Figure 1: Trend Over Time Analysis of Claims for CPT® codes 99283, 99284, and 99285

Figure 1:



Year 1

- Dec. 1, 2015 – Nov. 30, 2016

Year 2

- Dec. 1, 2016 – Nov. 30, 2017

Year 3

- Dec. 1, 2017 – Nov. 30, 2018

Helpful Resources

<https://cbr.cbrpepper.org/Help-Contact-Us>

CBR Help Desk

Welcome to our support page. View a list of [frequently asked questions](#) or click on the button below to submit your question.

Prior to submitting a request for assistance, to reduce the possibility that email replies from our help desk are blocked due to tightened email security (strong spam filters), please add our email Internet domain @tmf.org to your email Safe Senders List.



Submit a New Help Desk Request



Frequently Asked Questions

Frequently Asked Questions

<https://cbr.cbrpepper.org/FAQ>

Frequently Asked Questions

The following questions represent frequently asked questions (FAQs) from the provider community about Comparative Billing Reports (CBRs) and the CBR project in general. FAQs pertaining to a specific CBR release/topic are available with the resources specific to each CBR release/topic.

+	What is a CBR?
+	Why am I getting this report?
+	I have a question about the CBR I received. Who should I contact?
+	Can I get specific claim data related to this report?
+	I have a question about my claims. Who should I contact?
+	I did not receive a CBR. Can I request one?
+	How will I know if I have a CBR available?
+	Is there a sample CBR that I can view?

Helpful Resources, 2

- [2018 Medicare Fee-for-Service Supplemental Improper Payment Data](#)
- [CMS Evaluation and Management Services Manual](#)



Welcome to CBR Resources

This is the official site for information, training and support related to Comparative Billing Reports (CBRs).

CBRs are disseminated to the Medicare provider community to provide insight into Medicare policy and regional billing trends. The CBRs that are distributed to the provider community contain an analysis of billing practices across geographic and service areas. Medicare Administrative Contractors (MACs) have been producing and disseminating comparative billing reports to providers in their jurisdiction as part of their provider education efforts for many years. The Centers for Medicare & Medicaid Services (CMS) has formalized and expanded the program to the national level.

A CBR will present the results of statistical analyses that compare an individual provider's billing practices for a specific billing code or policy group with the billing practices of that provider's peer groups and national averages. Each CBR is unique to a single provider and is only available to that individual provider. CBRs are not publicly available.

Success stories: How your peers have used CBRs.

[Go to Success Stories](#)

Upcoming Event: CBR0201906 Emergency Department Services

When: Tuesday, June 11, 2019
3:00 - 4:00 p.m. EDT

Topic: This session will review the Comparative Billing Report (CBR) 201906 on Emergency Department Services, released May 31, 2019.



CBR 201906:

Emergency Department Services

- [Register for Upcoming Training](#)
- When:** Tuesday, June 11, 2019
3:00 - 4:00 p.m. EDT
- [Access Your CBR](#)

CBR 201905:

Air Ambulance Transports

- [Sample CBR: Mock Provider Data \(PDF\)](#)
- [Training: Recording and Handouts](#)
- [National/Specialty Data \(XLSX\)](#)
- [Access Your CBR](#)

CBR 201904:

Vitamin D Testing

- [Sample CBR: Mock Provider Data \(PDF\)](#)
- [Training: Recording and Handouts](#)
- [National/Specialty Data \(XLSX\)](#)
- [Access Your CBR](#)

CBR 201903:

Subsequent Hospital Care

- [Sample CBR: Mock Provider Data \(PDF\)](#)
- [Training: Recording and Handouts](#)
- [National/Specialty Data \(XLSX\)](#)
- [Access Your CBR](#)

CBR 201902:

Office Visits, New and Established, Family Practitioners

- [Sample CBR: Mock Provider Data \(PDF\)](#)
- [Training: Recording and Handouts](#)
- [National/State Data \(XLSX\)](#)
- [Access Your CBR](#)

CBR 201901:

Intensity-Modulated Radiation Therapy

- [Sample CBR: Mock Provider Data \(PDF\)](#)
- [Training: Recording and Handouts](#)
- [National/State Data \(XLSX\)](#)
- [Access Your CBR](#)

Questions?

